

GIBSONS LANDING HERITAGE SOCIETY

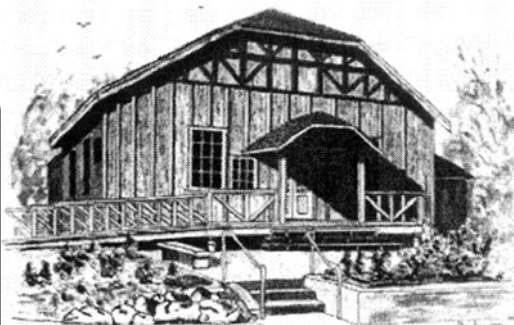
662 North Road, Gibsons, BC V0N 1V9 Tel: 604-886-8998

UPCOMING EVENTS*

October 14, 15, 16, 2010 October 21, 22, 23, 2010 October 28, 29, 30, 2010 C.E. Productions The Gin Game	8:00 PM
October 17 & 24, 2010 C.E. Productions The Gin Game	2:00 PM
October 18, 2010 Sunshine Coast Film Society Micmacs - France 2009	7:30 PM
October 24, 2010 Black Cat Cinema Edge of the World B.C.'s Early Years	7:30 PM
November 1, 2010 Sunshine Coast Film Society The Secrets (Ha-Sodot) Israel 2007	7:30 PM
November 2, 3, 4, 2010 Jean Pierre Makosso From the Podium to the Throne	7:30 PM
November 5, 2010 Environmental Film Festival	7:00 PM
November 11, 12, 13, 14, 2010 November 17, 18, 19, 2010 The Writer	8:00 PM
November 14, 2010 The Writer	2:00 PM
November 15, 2010 Sunshine Coast Film Society Kenny - Australia 2006	7:30 PM
November 20, 2010 Joanna Chapman-Smith The Rakish Angles	8:00 PM
November 27, 2010 Allison Crowe	8:00 PM
November 29, 2010 Sunshine Coast Film Society The Necessities of Life Quebec 2008	7:30 PM

* Subject to change
Please check our website
for further information
on these and future events

**Gibsons Landing Heritage Society
Annual General Meeting
takes place on
October 27th, 2010
at 7:30 PM
at the Heritage Playhouse
All members are welcome
Wine and cheese
following the meeting
Please let us know if you
plan to attend.**



© Terry Barker

BIOGRAPHIES OF 2010 DIRECTORS

Diane Berdahl is a long time Gibsons resident who has always had an interest in the past, present and future history of Gibsons.

Karen Careless has been involved with the Playhouse since prior to its opening. She has acted on its stage, worked the door, ushered, done concession and generally just shown the building the respect it is worth, as this theatre has heart and history.

Colleen Elson came to the Sunshine Coast in August, 1969 as a teacher. She later became an elementary school principal and then a Director of Instruction for the local School District. She retired in 1992. Originally from Australia, Colleen has been involved with theatre and related activities from childhood. As a member of the GLHS Board of Directors since 1994, Colleen acted as Project Manager for the renovation of the interior of the Heritage Playhouse.

Dominique Hutchinson has been director of Dsdance Company and Dominique's School of Dance for the last 17 years. Dominique has been involved with the Heritage Playhouse as a renter, dancer, producer since 2001. In 2009 she joined the Board of Directors of GLHS in order help, support and preserve Gibsons own venue for the performing arts.

Jack Jory is the director in charge of maintenance at the Heritage Playhouse and is always incredibly practical and diligent in his duties.

Nest Lewis has the honour of being the President of the Gibson's Landing Heritage Society. As one of the plaques says... "The Heritage Playhouse is a dream come true....." Nest has been involved with the GLHS for nearly 20 years in various capacities and enjoys working with the dedicated team that makes up the GLHS Board of directors. She is full of admiration for the constant community volunteer involvement that has made the Heritage Playhouse the success that it is.



Sharon - Dominique - Colleen - Karen - Jack - Nest - Gillian - Diane

GLHS Directors - 2010

Nest Lewis	President
Colleen Elson	Vice President
Carol Service	Treasurer
Diane Berdahl	Secretary
Karen Careless	
Dominique Hutchinson	
Jack Jory	
Sharon O'Brien	
Gillian Wright	

Sharon O'Brien was asked to join the Board of Directors of GLHS in 2005. She had recently retired and moved to the Sunshine Coast from Vancouver/Richmond and was looking for some involvement in the community different from her working career in health care. Since joining, she has held the position of Director-at-Large and has taken on the responsibility of writing grant applications for the Heritage Playhouse. The money gratefully received enables us to continue to maintain and upgrade the much used heritage building dedicated to the performing arts.

Carol Service grew up on the Sunshine Coast and is a very busy grandmother, who also helps to run her husband's construction business.

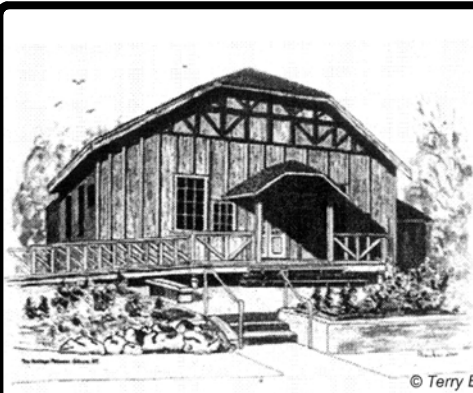
Gillian Wright became involved with the Gibsons Landing Heritage Society after moving to Gibsons six and a half years ago. Since then, she has volunteered her time in many capacities both at the Heritage Playhouse and for the GLHS.

We are on the Web!

www.heritageplayhouse.com

e-mail: housemanager@heritageplayhouse.com (Zeta Gaudet)

GIBSONS LANDING HERITAGE SOCIETY



**Please note
All donations to the
Gibsons Landing Heritage Society
are tax deductible.**

The average monthly costs for the operation of the Heritage Playhouse during the past year, from September 2009 through to August 2010 are:

Phone -	\$125.25
Hydro -	\$265.96
Gas -	\$218.54
Cleaning -	\$158.33
Bookkeeping -	\$76.67
Water/Sewer -	\$120.20
Insurance -	\$180.97
Management -	\$1048.75

Two grants have been received this year:

2010 Greater Gibsons Community
Participation Grant-in-Aid
and
2010 Rural Areas Grant-in-Aid

The money received will go towards an upgrade to the external lighting, construction of steps and repair to the sidewalk providing access from the rear parking lot of the Playhouse.

Both upgrades were considered safety issues that need to be rectified. Thanks to Clay Hepburn and Denis Turenne for all their hard work.

Many thanks also to the Sunshine Coast Regional District for their ongoing financial support.

**Gibsons Landing Heritage Society
Annual General Meeting
takes place on
October 27th, 2010
at 7:30 PM
at the Heritage Playhouse
All members are welcome
Wine and cheese
following the meeting
Please let us know if you
plan to attend.**

GLHS MEMBERSHIP APPLICATION OR RENEWAL

\$10.00

Name _____

Street Address _____

E-mail _____ Phone _____

Please mail \$10.00 for your 2011 membership to:

Gibsons Landing Heritage Society
662, North Road, Gibsons, B.C., V0N 1V9

Or payment may be made in person at the Heritage Playhouse office
between 10:00 AM and 1:00 PM on any Wednesday morning